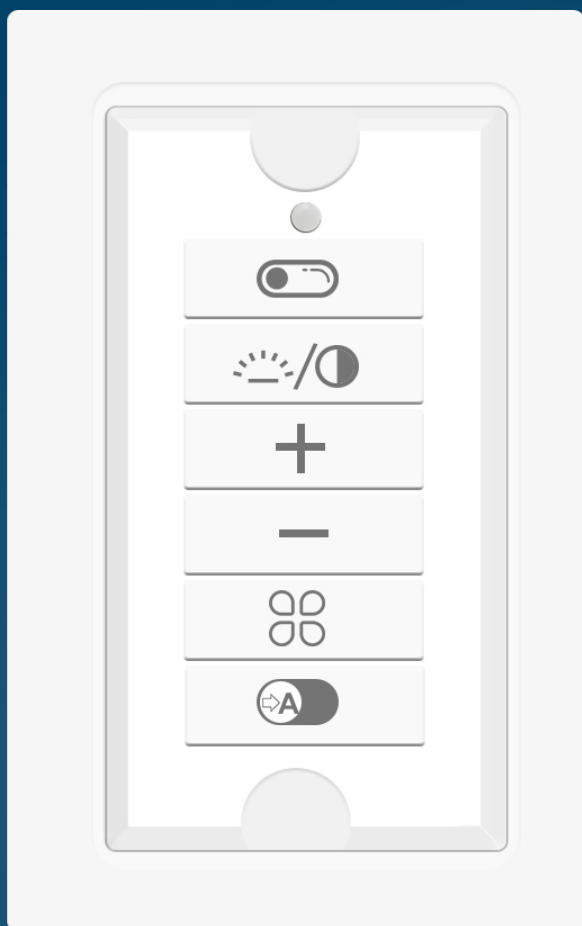


TIO SL



Wireless Bluetooth Switch

DC lighting controller

TL-WS-BCNW-SN-34-01



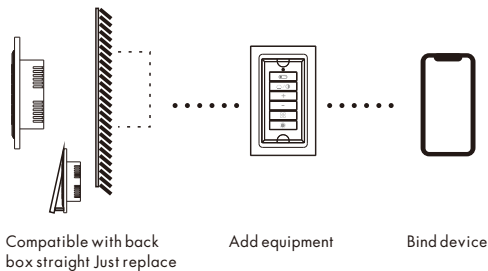
Product Range

Model	Input voltage	Communication protocol	Communication frequency	Maximum transmit power	Acceptance sensitivity	Barrier-free communication distance	Working temperature	Network required.
TL-WS-BCNW-SN-34-01	AC 100-347V 50/60Hz	Bluetooth Mesh	2405~2480MHz	8dBm	-92dB	20m(65ft)	-20~+60℃	2.4G

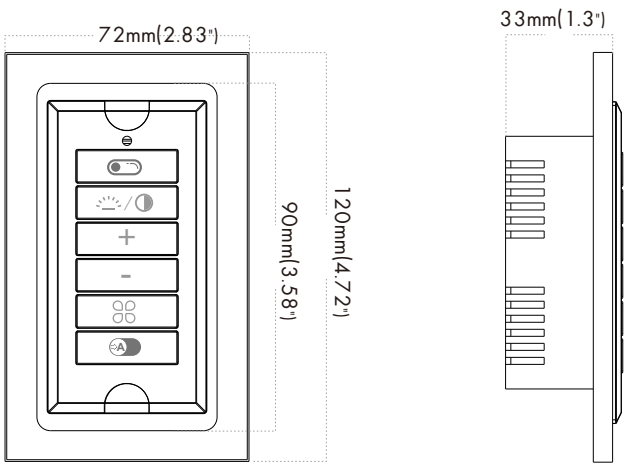
* Note: Do not use in large-scale metal areas or areas with strong electromagnetic waves nearby

Features

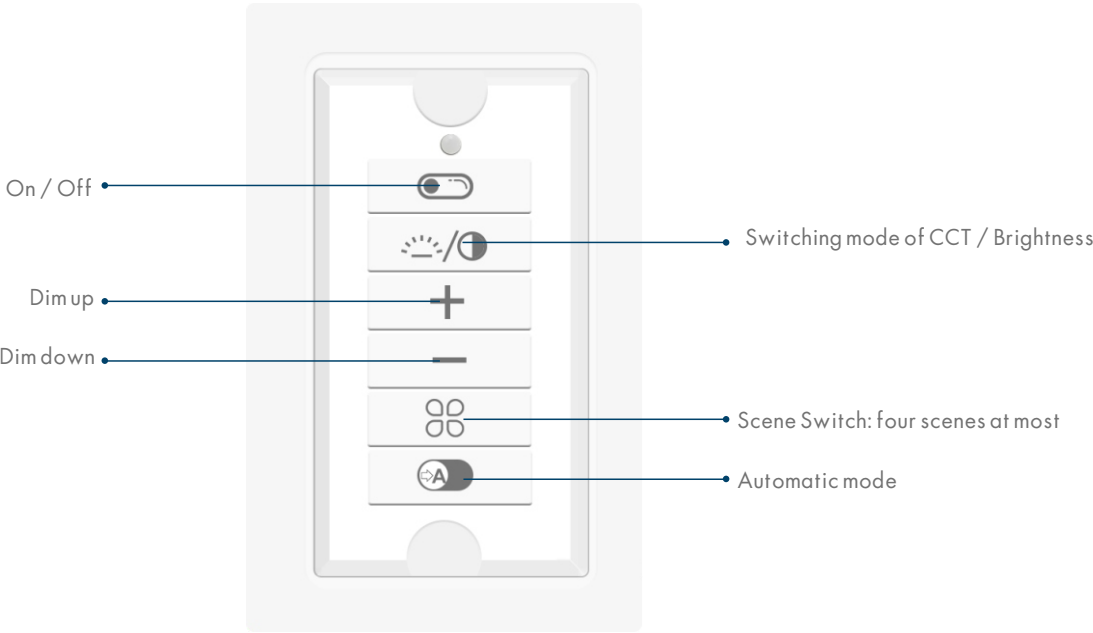
Bluetooth Mesh wireless ad hoc network;
Wide input voltage AC 100-347V 50-60HZ
With relay output maximum 800W (120V)
Ultra-low standby power consumption is less than 0.5W



Size



Diagram

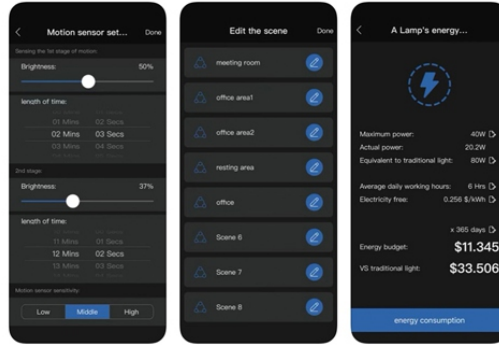


APP "SL solutions"

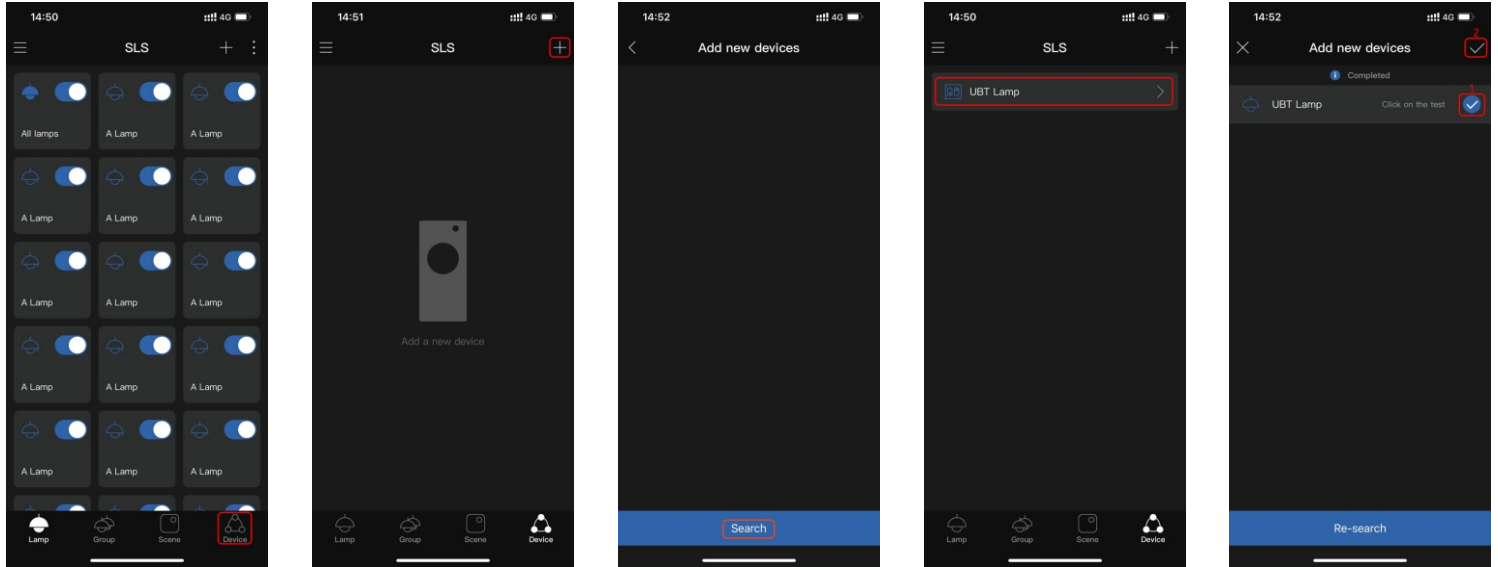


SL solutions
Smart Lighting Solution

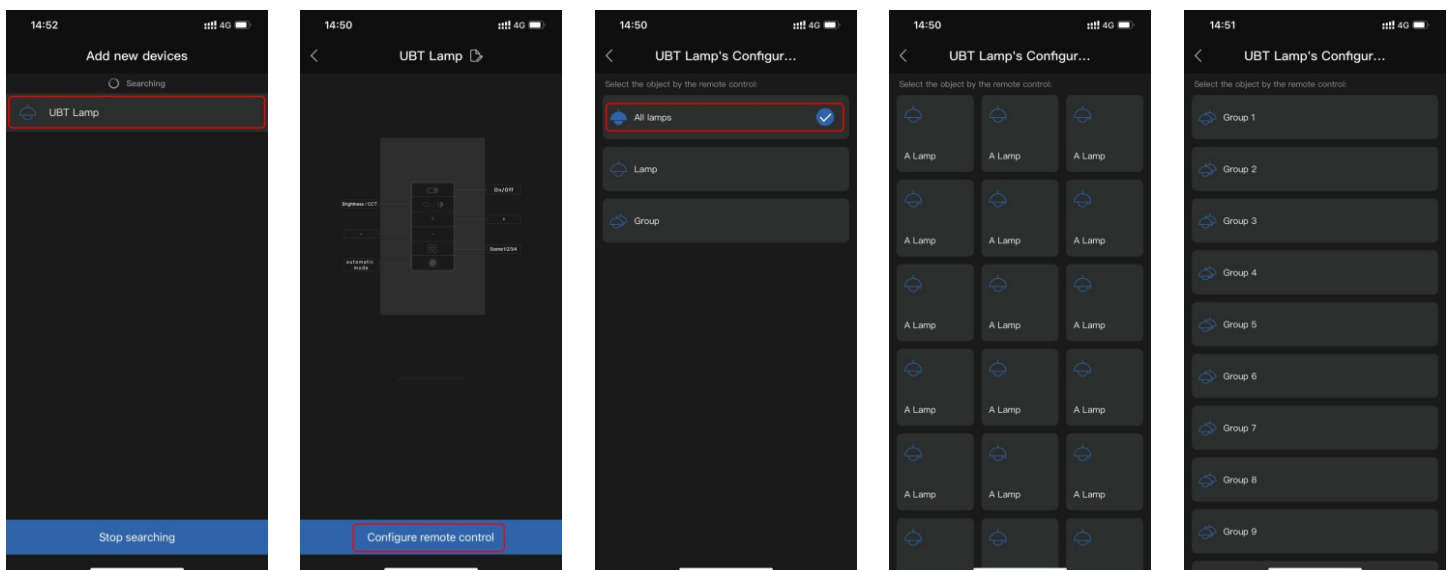
OPEN



Add remote



- 1-Click "device"
- 2-Click "add device"
- 3-Click "search"
- 4- Click to stop searching after searching out the device
- 5- After stopping the search, select the device that needs to be added

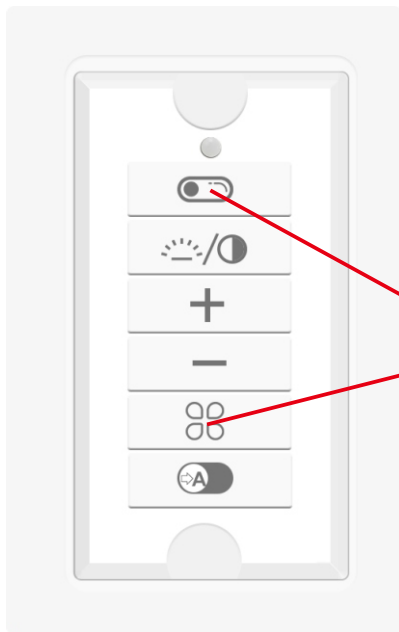


- 6- Click on the added device to enter the configuration page
- 7-Enter the binding device page
- 8-Select the device to be bound, which can support binding group, all devices, or single light
- 9-Bind a single device page,
- 10-Bind group page



Pairing

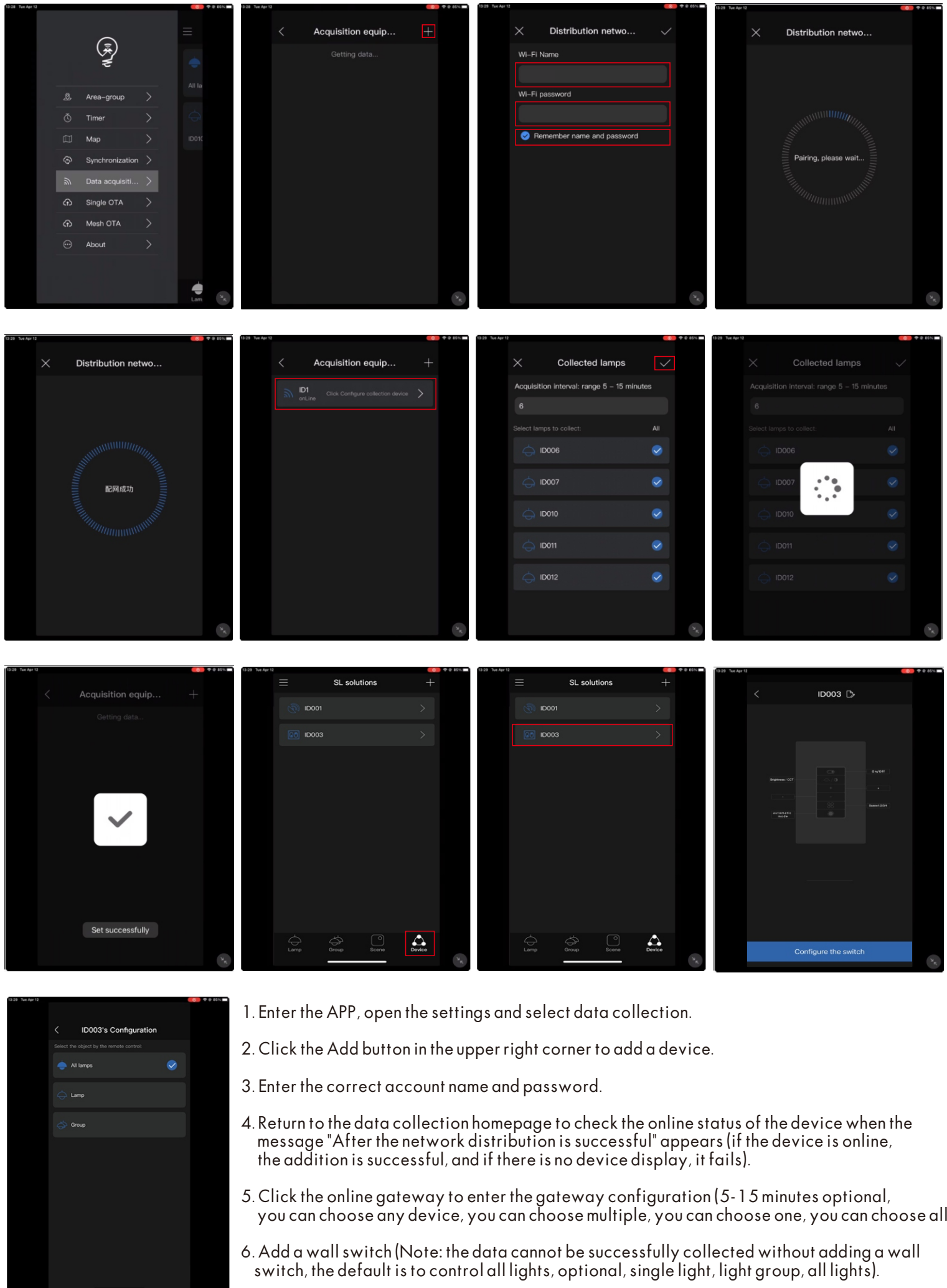
Network configuration: Press the "on/off" key & "Auto" key at the same time for 5-8 seconds, the red indicator blinks to enter configuration mode.



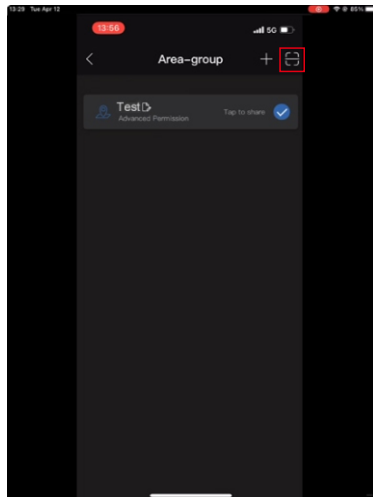
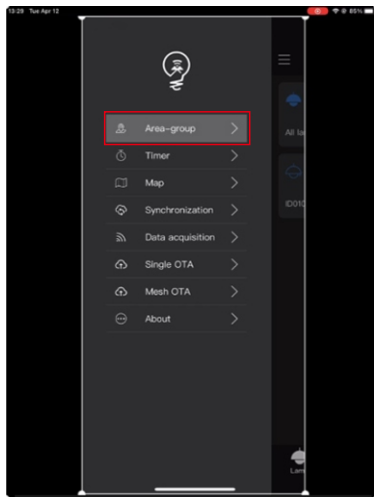
Pairing Reset

Bluetooth reset mode: Press the "on/off" key & "scene switch" key at the same time for 8-10 seconds, and then release the keys to reset successfully.

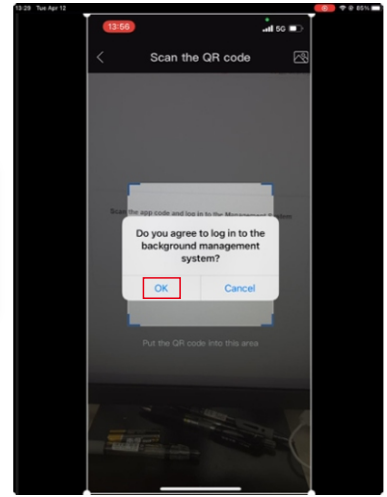
Data collection



1. Enter the APP, open the settings and select data collection.
2. Click the Add button in the upper right corner to add a device.
3. Enter the correct account name and password.
4. Return to the data collection homepage to check the online status of the device when the message "After the network distribution is successful" appears (if the device is online, the addition is successful, and if there is no device display, it fails).
5. Click the online gateway to enter the gateway configuration (5-15 minutes optional, you can choose any device, you can choose multiple, you can choose one, you can choose all).
6. Add a wall switch (Note: the data cannot be successfully collected without adding a wall switch, the default is to control all lights, optional, single light, light group, all lights).



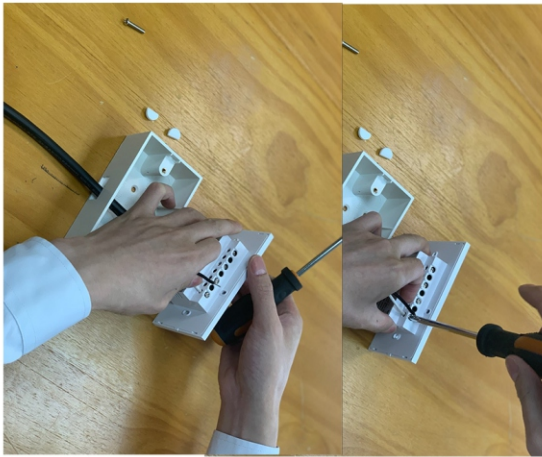
Two-dimensional cloud platform website
website: <http://3.136.59.53:8082/web/#/LoginPc>



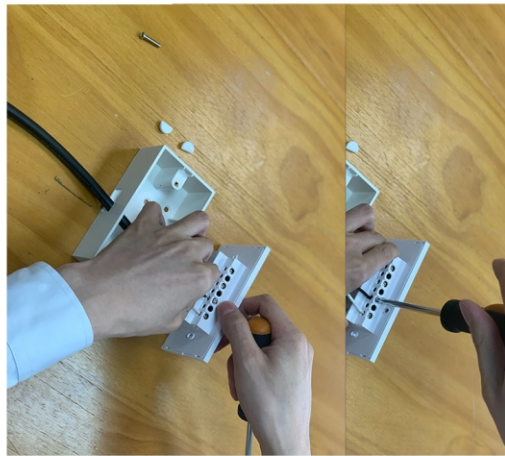
7. Open the area and turn on the scan code function in the upper right corner.
8. The computer opens the website to display the QR code, and the mobile phone scans the code to authorize the login.
9. After the mobile phone is authorized to log in, the web page jumps to the data details interface (you can view it by year, month, and day, you can view it by partition, you can view it by single light, and the chart can be exported).

Installation way 1

No wiring the bluetooth fixtures, no limited on power. When cut off the power, all fixtures are off, it has power loss on per fixture <0.5watt.



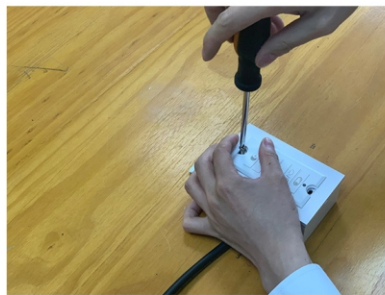
1



2



3



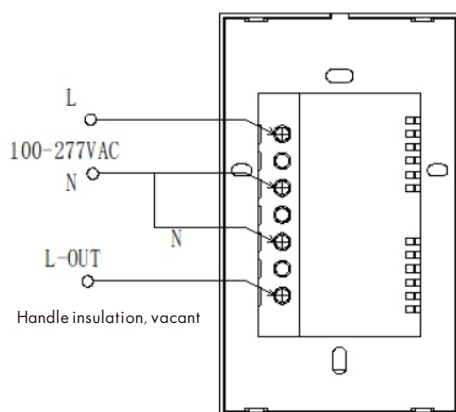
4



5



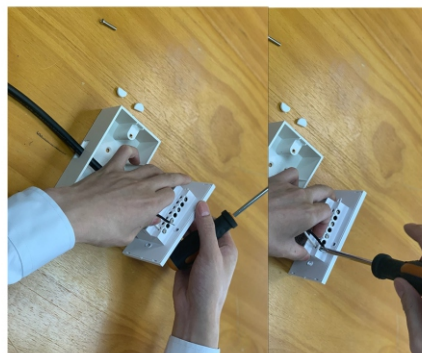
6



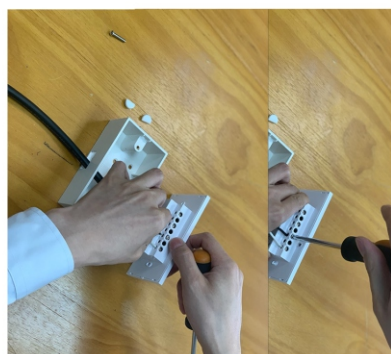
Lamp AC input non-forced power-off wiring method

Installation way 2

Wiring the bluetooth fixtures, the max power is 800W. When cut off the power, all fixtures are off, it's no power loss.



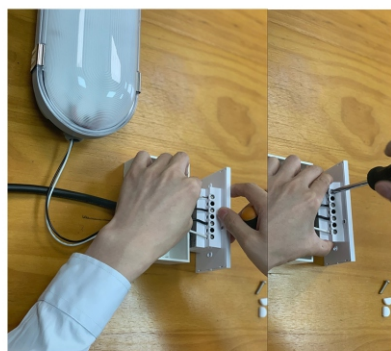
1



2



3



4



5



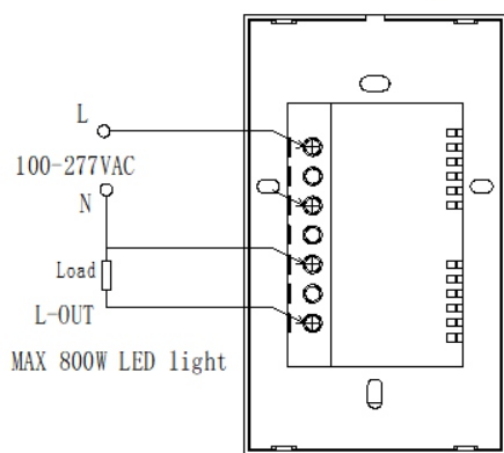
6



7



8



Lamp AC input forced power-off wiring method