

# TIOSL



Zhaga Z10 LED PIR Fixture Mounted Smart Controller

DC lighting controller

TL-ZA-BPRN-MN-12-02

## Product Range

Part No.	Input voltage	Operating current	Communication protocol	Communication frequency	Photosensitive range	Operating temperature
TL-ZA-BPRN-MN-12-02	DC12V	150mA (max)	Bluetooth Mesh	2405-2480MHz	10-1000Lux	-20~+60℃

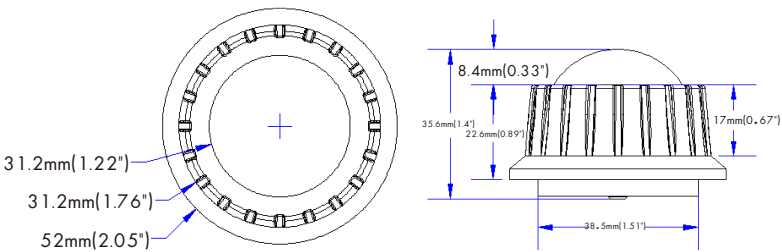
Max. lauch power	Rx sensitivity	Max. communication distance	Mounting height	IP rating
8dBm	-92dB	50m(164ft)	<12m(40ft) (Open environment)	IP65

\* Note: Do not use in large-scale metal areas or areas with strong electromagnetic waves nearby

## Features

- Bluetooth Mesh wireless ad hoc network with zhaga z10 interface;
- Microwave sensor with adjustable sensitivity;
- Light sensor to maintain constant illumination;
- Bluetooth control single dimming;
- Magnet reset function;(The magnet stays near the top of the module for 5 seconds to reset)

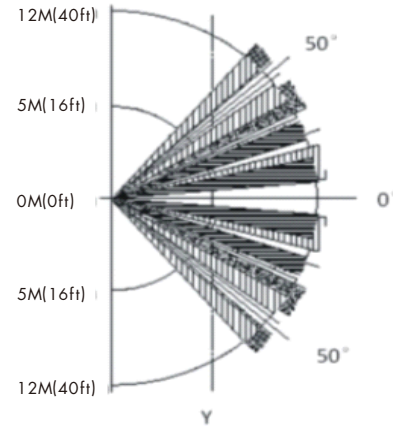
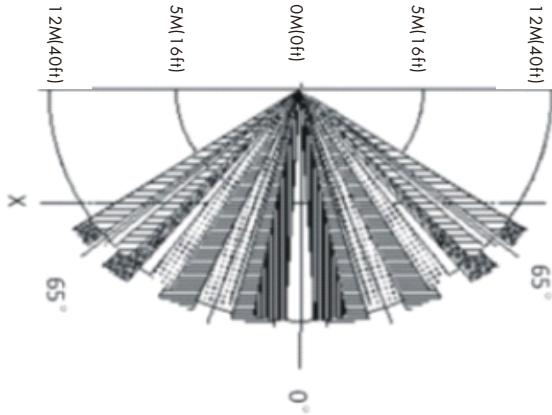
## Size



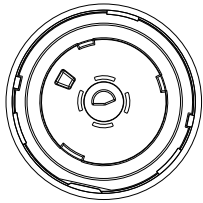
## Diagram



## Sensor detection angle

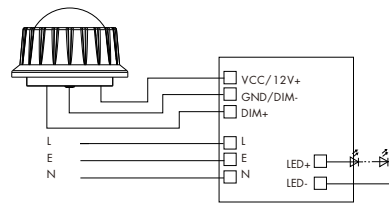


## Wiring diagram

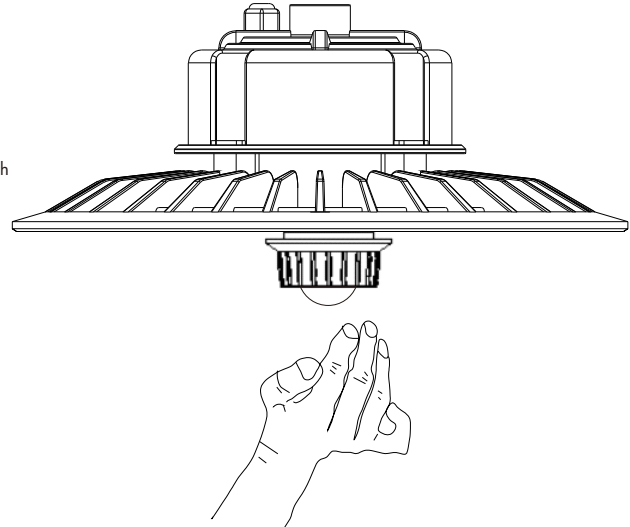
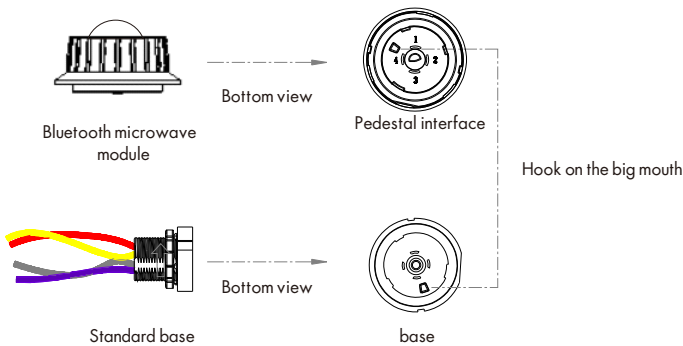


PIN1: 12V  
PIN2: GND/DIM-  
PIN3: NC  
PIN4: DIM+

## Wiring circuit diagram



## Install the Lighting Fixtures



## Application

- LED UFO Light
- LED Linear High Bay Light
- LED Lighting Fixtures with Zhaga connector

## Installation Precautions:

1. Before installing the sensor module, first turn off the circuit breaker switch at the power supply.
2. Do not enable the installation of large-scale metal blocking positive lamps and places
3. Do not be placed inside the strong magnetic field, the product is maintained at least 0.5 meters from the magnetic material

## Precautions

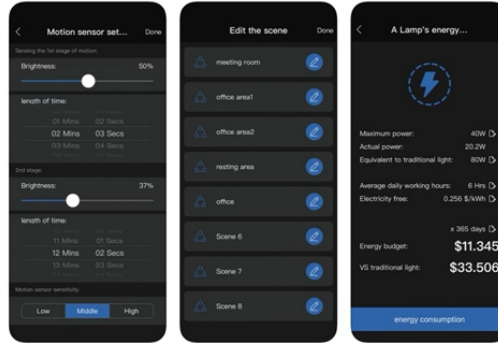
1. We reserve the necessary text and image technical parameters correction rights
2. Without license or authorization, it is not allowed to disassemble and other people as damage, otherwise the contractual provisions guaranteed immediate failure
3. the product should not be installed in a place where the air is suddenly changed, such as air conditioning air outlet, wind direction rotation, etc.

# APP "SL solutions"

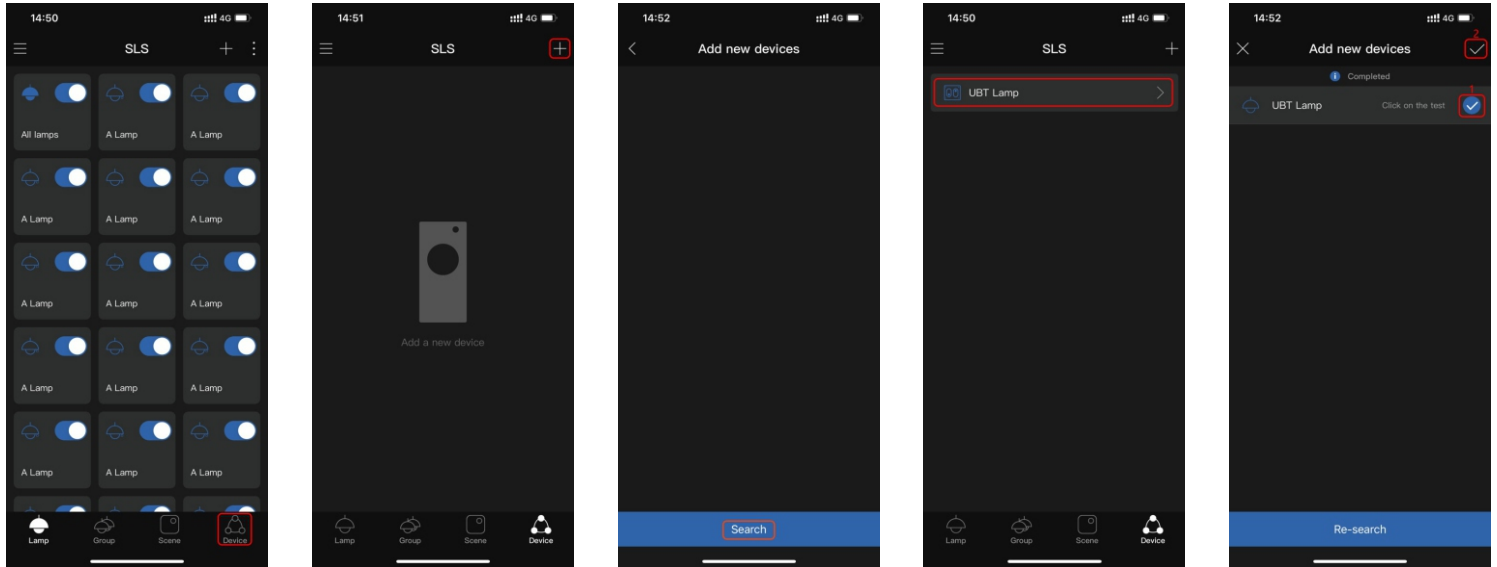


SL solutions  
Smart Lighting Solution

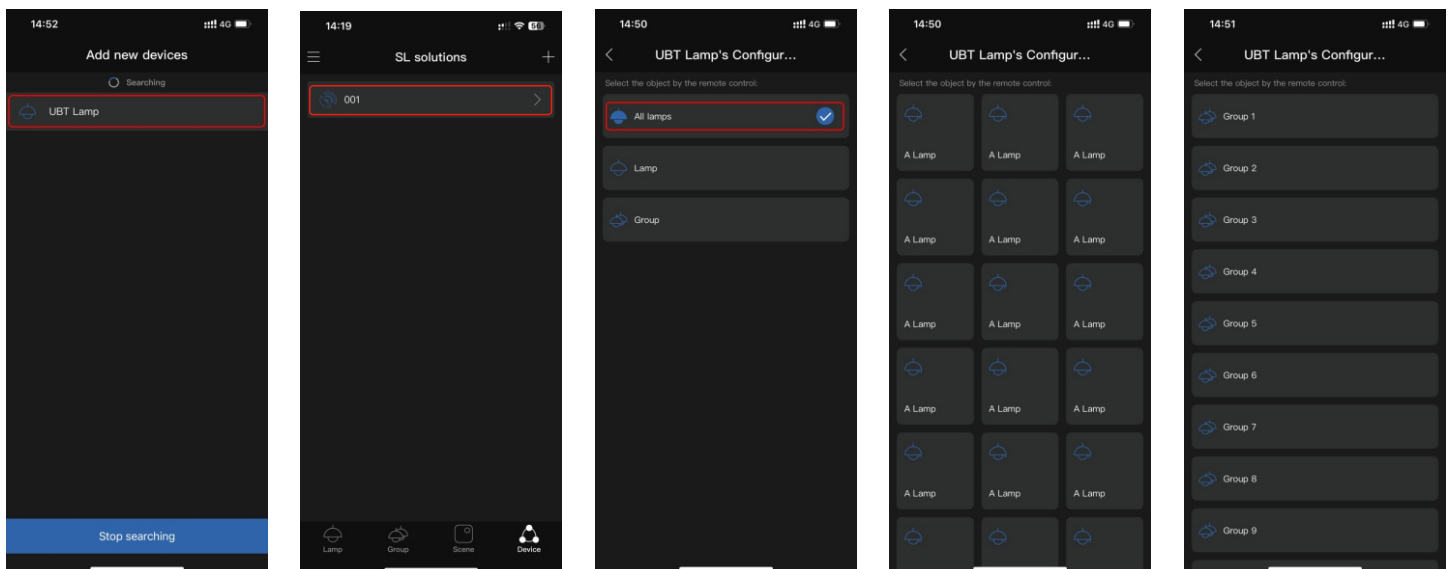
OPEN



Add sensor



- 1-Click "device"
- 2-Click "add device"
- 3-Click "search"
- 4- Click to stop searching after searching out the device
- 5- After stopping the search, select the device that needs to be added



- 6- Click on the added device to enter the configuration page
- 7-Enter the binding device page
- 8-Select the device to be bound, which can support binding group, all devices, or single light
- 9-Bind a single device page,
- 10-Bind group page