

TIOSL



Fixture Mounted PIR Sensor with Jack Interfac

DC lighting controller

TL-BJ-BPRN-MN-12-02

Product Range

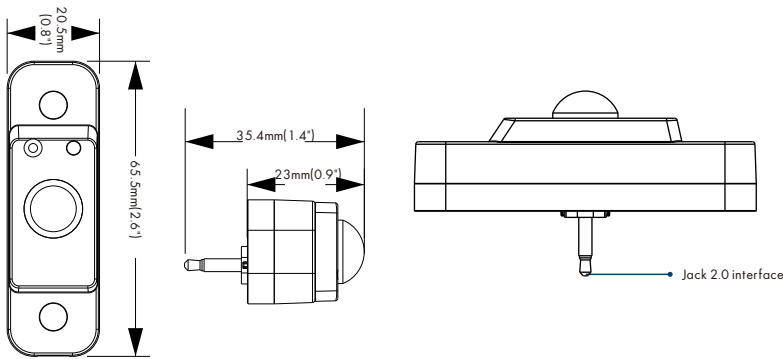
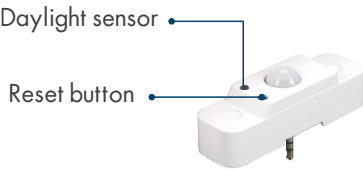
Part No.	Input voltage	Operating current	Communication protocol	Communication frequency	Photosensitive range	Operating temperature
TL-BJ-BPRN-MN-12-02	DC12V	150mA (max)	Bluetooth Mesh	2405-2480MHz	10-1000Lux	-20~+60℃

Max. lauch power	Rx sensitivity	Max. communication distance	Mounting height	IP rating
8dBm	-92dB	50m(164ft)	<6m(20ft) (Open environment)	IP20

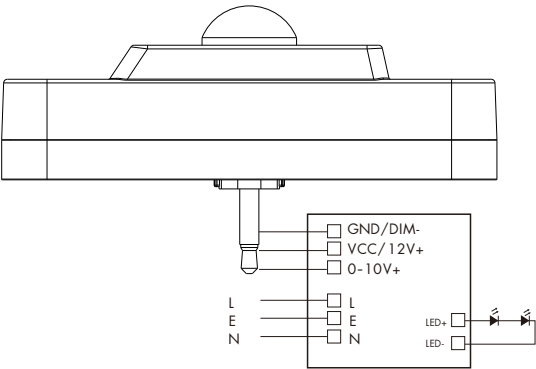
Features

- Connect Bluetooth Mesh wireless ad hoc network;
- PIR sensor with adjustable sensitivity;
- Light sensor to maintain constant illumination;
- Bluetooth control single dimming;

Size

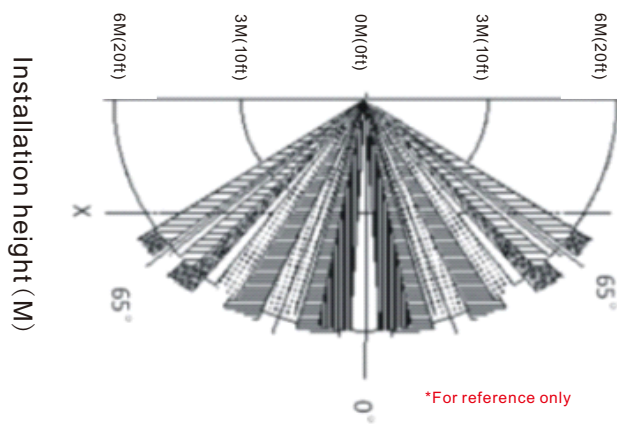


Wiring

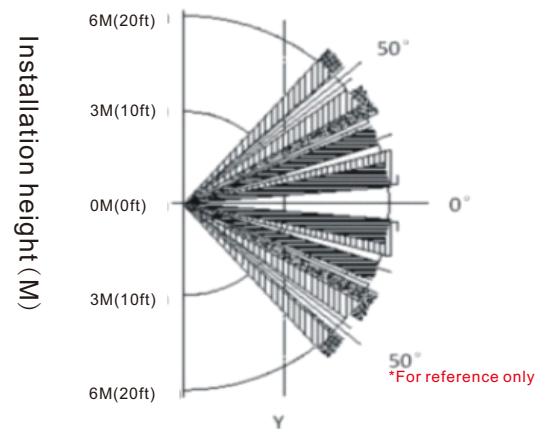


Sensor detection angle

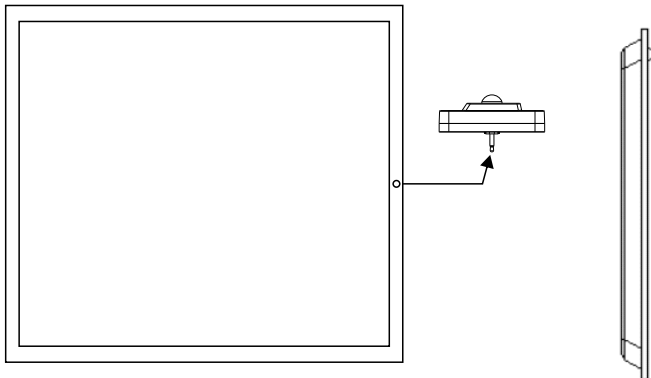
Contest installation detection range map



Wall installation detection range map



Wiring diagram



Application

LED Panel Light

Installation Precautions:

1. Before installing the Bluetooth module, turn off the circuit breaker switch at the power supply
2. Do not install lamps and places where a large range of metal blocks the front.
3. There must be no short circuit between VCC and DIM when the power is turned on, which will cause the module to burn.

Precautions

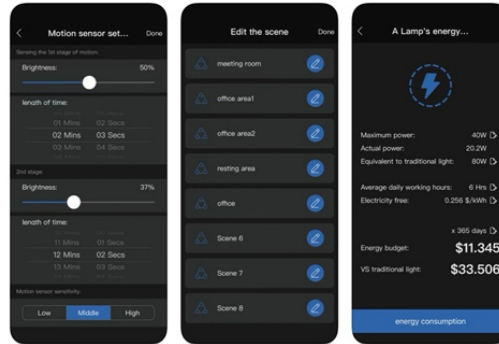
1. We reserve the right to correct technical parameters of necessary text and pictures
2. Without permission or authorization, man-made damage such as disassembly of the product shall not be carried out, otherwise the guaranteed contract terms will become invalid immediately
3. Do not install the product in a place where the air flow will change suddenly, such as the air outlet of the air conditioner, the rotation position of the wind direction, etc.

APP "SL solutions"

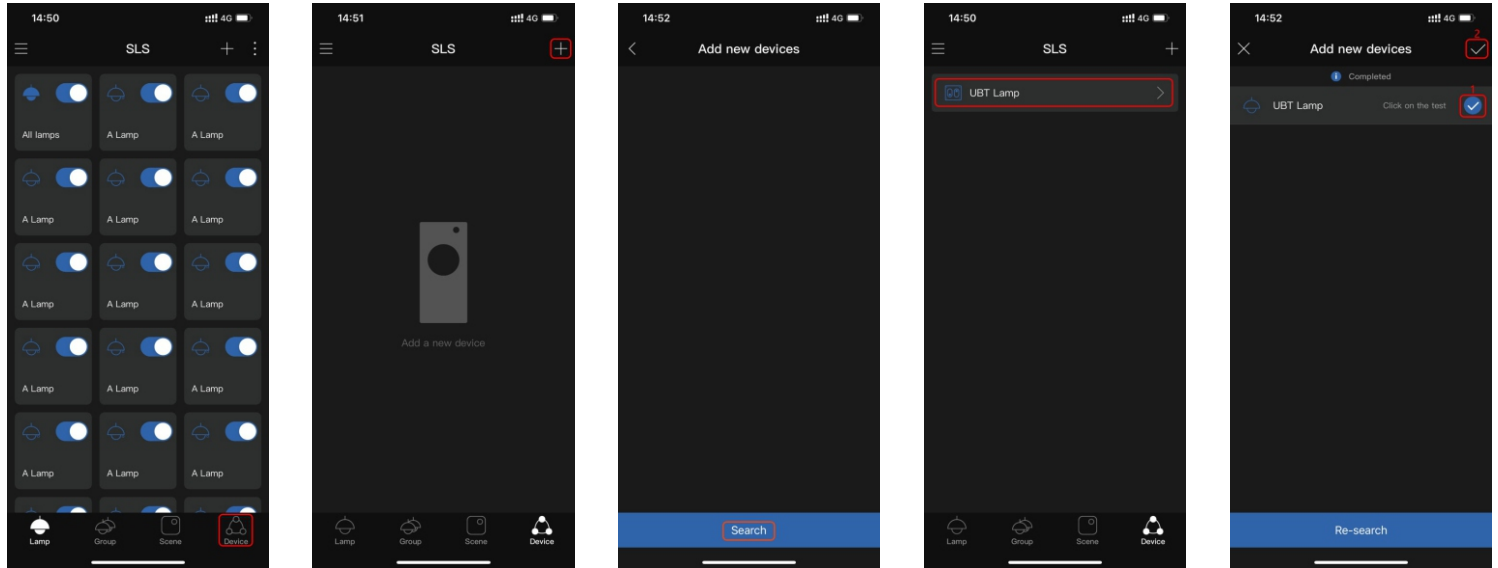


SL solutions
Smart Lighting Solution

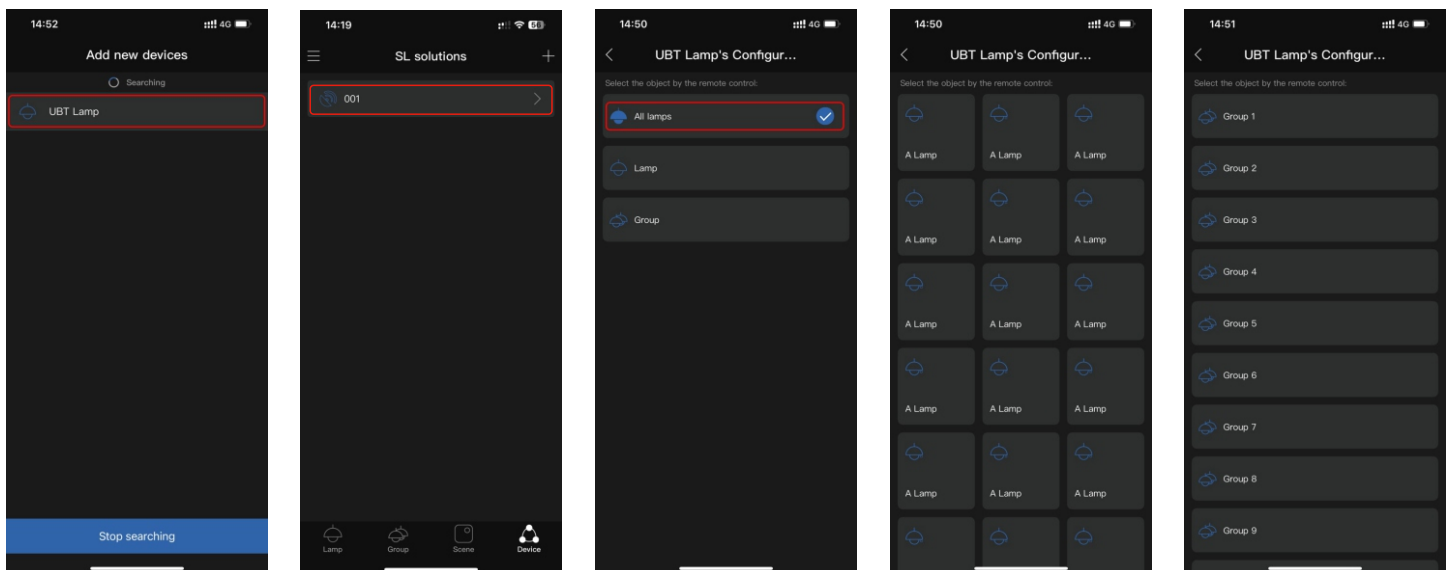
OPEN



Add sensor



- 1-Click "device"
- 2-Click "add device"
- 3-Click "search"
- 4- Click to stop searching after searching out the device
- 5- After stopping the search, select the device that needs to be added



- 6- Click on the added device to enter the configuration page
- 7-Enter the binding device page
- 8-Select the device to be bound, which can support binding group, all devices, or single light
- 9-Bind a single device page,
- 10-Bind group page

the company: Tiosl Technology Shenzhen Co., Ltd. | Email: info@tiosl.com | Web: www.tiosl.com

Add: A-2-5-10, Huafeng 1st Tech Park, Sanwei Community, Hangcheng Street Office Gushu Bao'n Shenzhen, China.