

TIOSL



Bluetooth remote control

DC lighting controller

TL-RC-BNNN-SN-03-04

Product Range

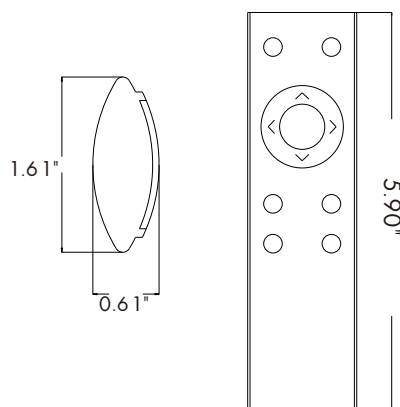
Part No.	Input voltage	Operating current	Communication protocol	Communication frequency	Operating temperature
TL-RC-BNNN-SN-03-04	DC 3V	25mA (max)	Bluetooth Mesh	2405-2480MHz	-20~+60°C

Max. launch power	Rx sensitivity	Max. communication distance	IP rating
8dBm	-92dB	100m(328ft)	IP20

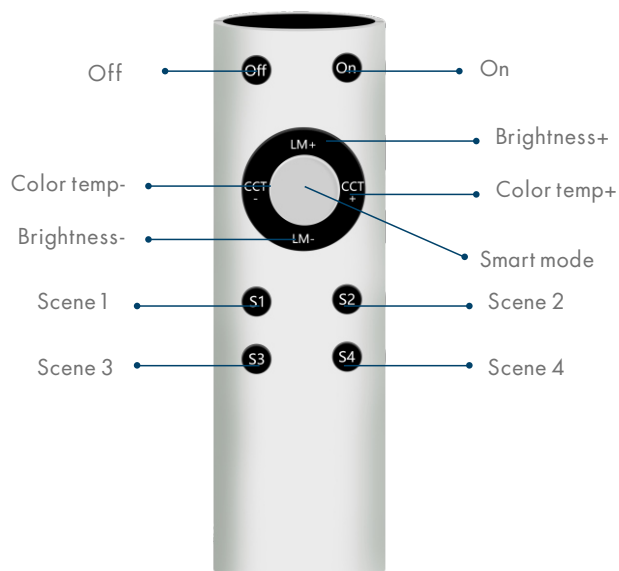
Features

- Bluetooth switch module
- mobile electronic remote control
- mesh wireless ad hoc network

Size



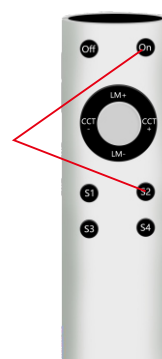
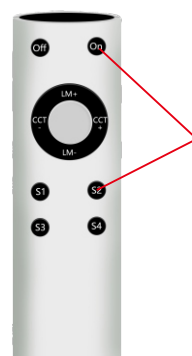
Diagram



Pairing & Reset

Pairing

Network configuration: Press the "on" key & "S2" key at the same time for 3-5 seconds, the red indicator blinks to enter the configuration mode.



Pairing Reset

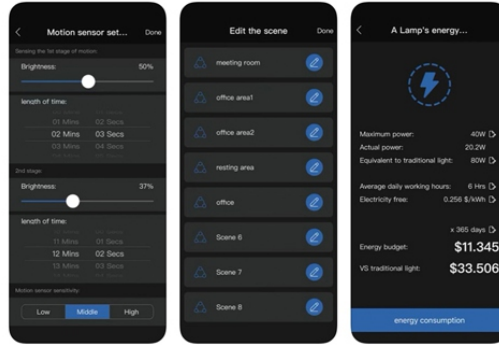
Bluetooth reset mode: Press the "on" key & "S2" key at the same time, then the indicator blinks frequently, press the "off" key within 3 seconds. The indicator blinks rapidly for 2 seconds and off means resetting successfully.

APP "SL solutions"

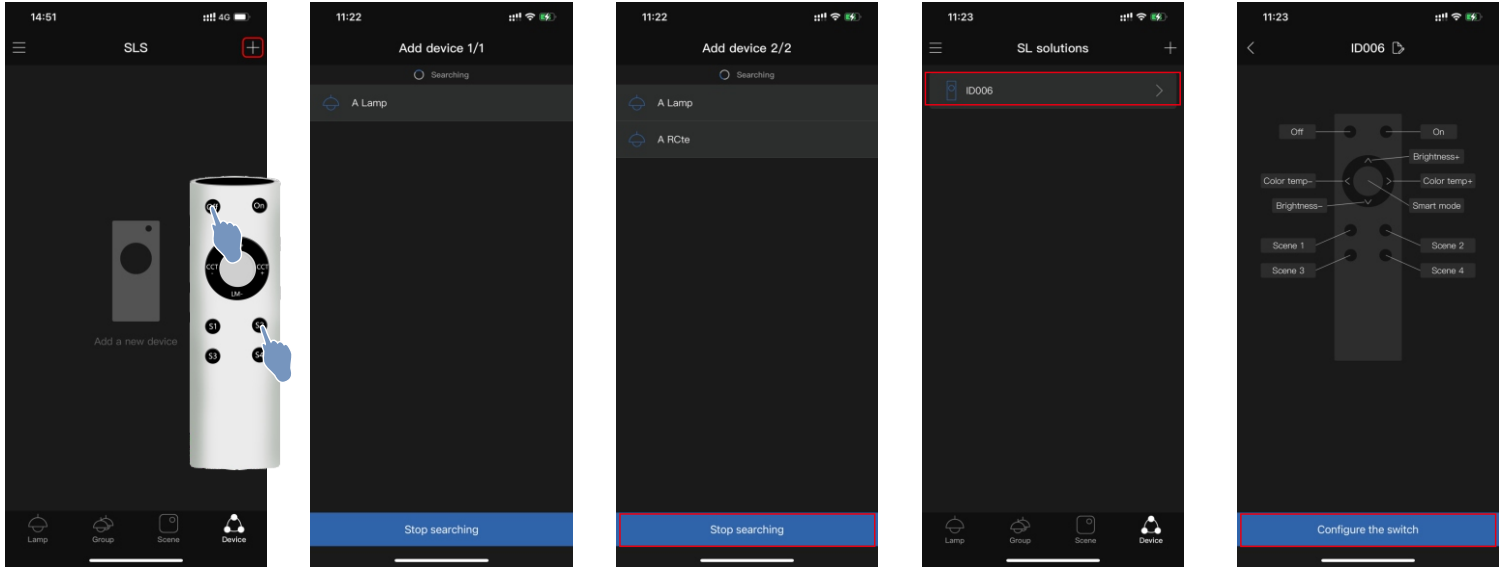


SL solutions
Smart Lighting Solution

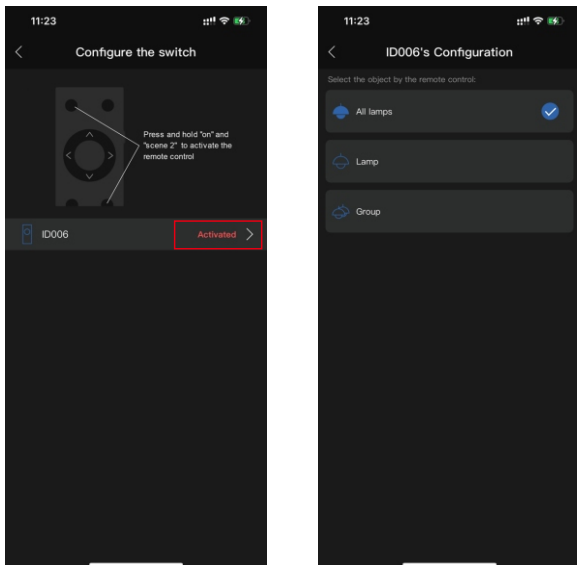
OPEN



Add remote



1. Add remote control. (*At the same time, press and hold off + Scene 2 and the indicator light flashes at 1Hz (this is the distribution network status)
2. Search for remote control equipment. (*If it is a paired device, it needs to reset the previous network, then it needs to press the on key (remove the previous network) within two seconds after holding down the off + Scene 2 at the same time, and then follow the network distribution steps)
3. The search is successful. Click to select the device.
4. After the pairing completed, please press ON/OFF and brightness "+" to activate, then the remote appears in the App.
5. After adding, the accessories page displays the current remote controller.
6. Enter the configuration remote controller.



7. The remote controller is not used for a long time and needs to be reactivated.
 8. Optional multi lamp, single lamp and all lamps Then.
- the operation flow of remote control distribution network.