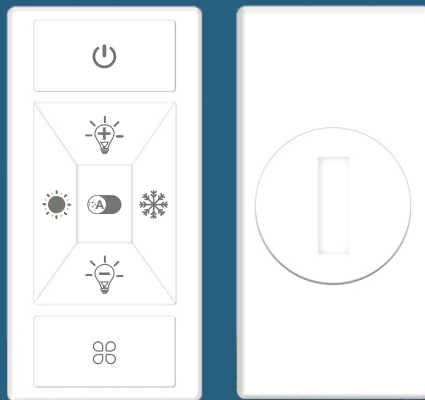


# TIOSL



## Smart Switch/Remote Control Kit

DC lighting controller

TL-RD-BNNN-SD-03-04

# Product Range

Model	Input voltage	Operating current	Max. transmit power	Rx sensitivity	Communication frequency	Operating temperature	Max. communication distance	IP rating
TL-RD-BNNN-SD-03-04	DC3V	8mA (max)	Bluetooth 8dBm	Bluetooth -92dB	2405~2480MHz	-20~+40°C	Bluetooth 100m	IP20

\* Note: Do not use in large-scale metal areas or areas with strong electromagnetic waves nearby

## Features

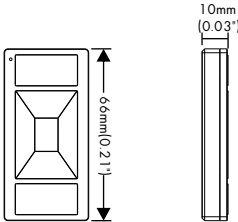
- Wireless smart remote control wall mount kit.
- Remote control.
- TIOSL App setting.



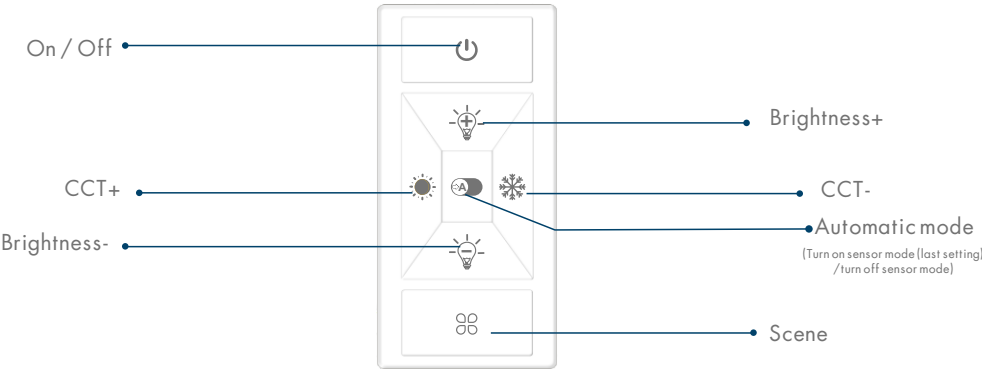
Add equipment

Bind device

## Size



## Diagram

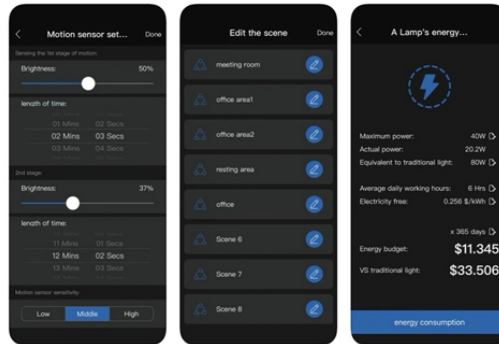


# APP "SL solutions"

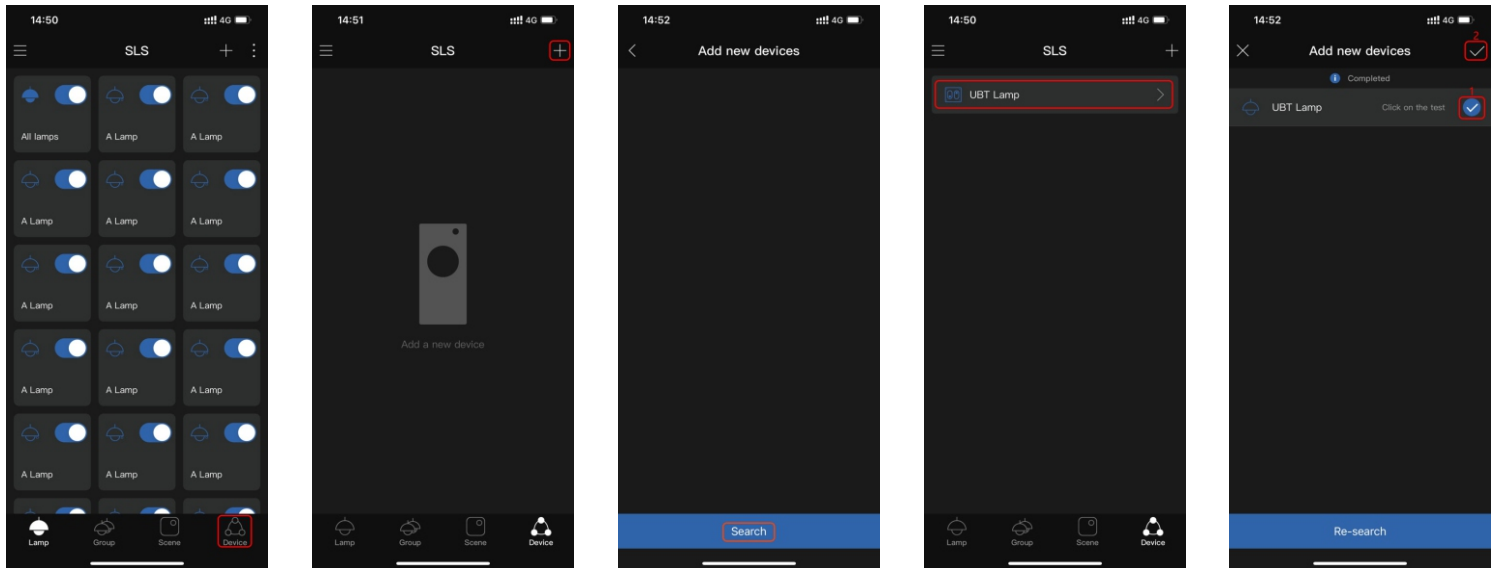


SL solutions  
Smart Lighting Solution

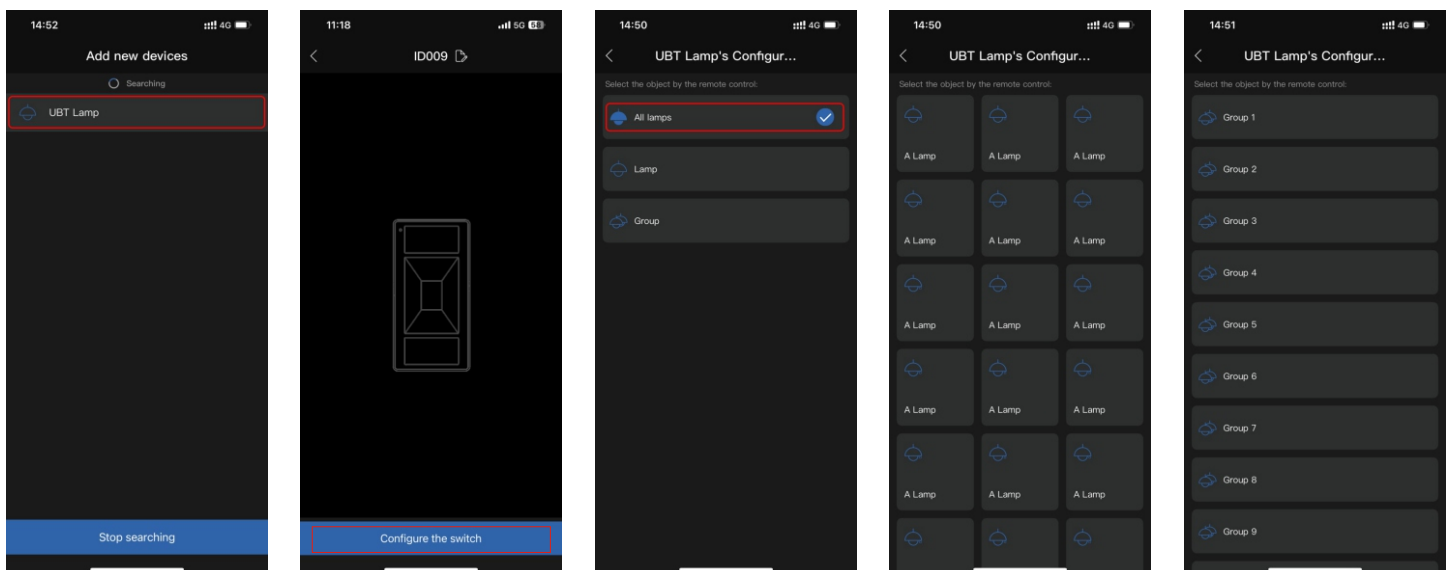
OPEN



Add sensor

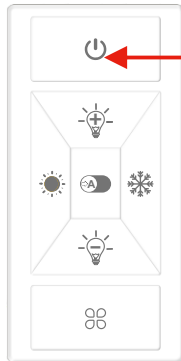


- 1-Click accessories
- 2-Click add device
- 3-Click search
- 4- Click to stop searching after searching out the device
- 5- After stopping the search, select the device that needs to be added
- 6-After the pairing completed, please press ON/OFF and brightness "+" to activate, then the remote appears in the App.

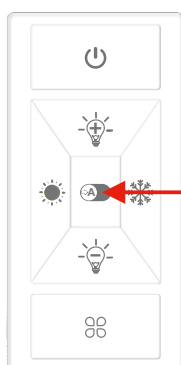


- 7- Click on the added device to enter the configuration page
- 8-Enter the binding device page
- 9-Select the device to be bound, which can support binding group, all devices, or single light
- 10-Bind a single device page,
- 11-Bind group page

## Reset



Press ON/OFF for 8 seconds to clear the current network and return to the initial settings, it will flick 4 times to response.



## Pairing Reset

Press "A" automatic mode for 8 seconds to enter the network pairing mode, it will flick 20 times to response

After the APP searched the controller and add it in, press "A" automatic mode again for 8 seconds to activate the device, the controller will flick 20 times to response